



Descriptions

The basic public address mixer amplifiers have power ratings from 30W. They are featured of 3 balanced microphone inputs, 2 aux inputs and 2 EMC inputs.

Priority muting is achieved via EMC1-2 for overriding other inputs except Mic1 on front panel. Individual gain controls are provided for Mic 1-3 and Aux 1-2, bass and treble controls and master volume control are provided for overall tone control. 70V, 100V and low impedance 4-16ohms speaker outputs are provided. Extensive protection from short-circuit, overload and high temp.

Optional

- * DC 24V available on less than 550W models
- * Panel with/without handhold
- * Faults monitoring module, it can output short circuit signal to achieve main/spare amplifier switch

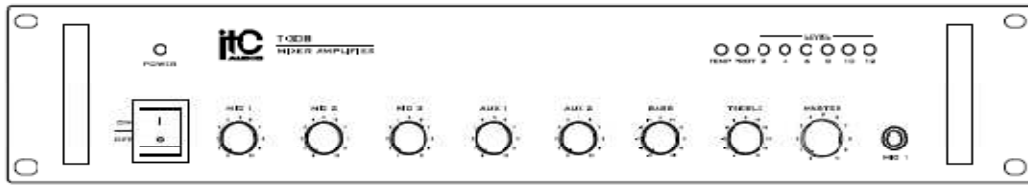
Features

- * Mixer amplifier for paging and background music system
- * Rated power from 30W
- * 2U rack mount (less than 120W)
- * 70V, 100V and low impedance 4-16ohm speaker output
- * Three balanced Mic inputs
- * Mic 1(phone jack) with VOX priority and VOX level on front panel
- * Mic 2-3 by XLR type on rear panel with phantom power
- * Two Aux Inputs and 2 line inputs for spare use
- * Two EMC priority inputs
- * EMC1 has priority over all inputs except MIC1
- * Mic 1-3, Aux 1-2 and master volume controls and bass/treble tone control
- * Short circuit, overload and high temp protection

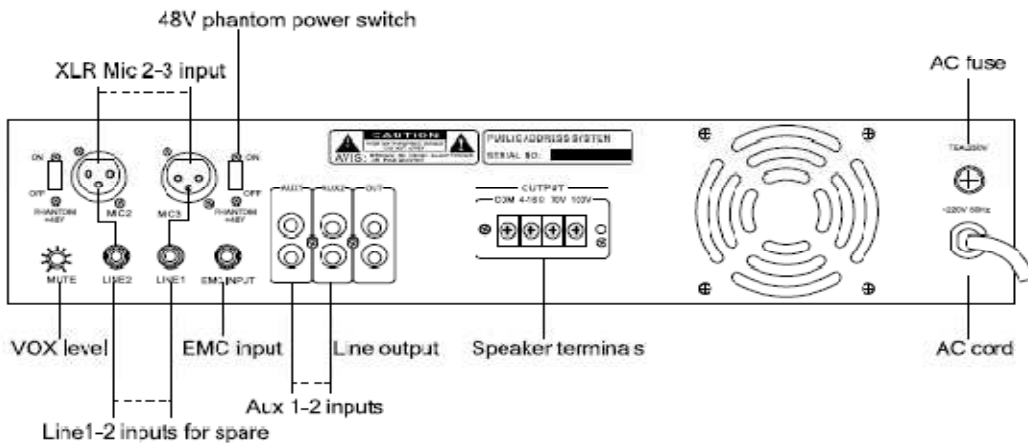
Specifications

Model	T-30B
Rated Power Output	30W
Speaker Outputs	70V, 100V & 4~16Ω
Input	MIC 1, 2, 3: 5mV/600Ω , Balanced, MIC1 6.3 balanced MIC2, 3 XLR balanced with phantom power AUX 1, 2: 250mV/15KΩ , Unbalanced EMC : 250mV/15KΩ , Unbalanced
Tone	Bass ± 10dB at 100Hz Treble ± 10dB at 10KHz
Frequency Response	50Hz~15KHz(± 2dB)
S/N Ratio	MIC 1,2,3: 66dB; AUX 1,2: 80dB
THD	Less than 0.5% at 1kHz, 1/3 rated power
Muting Function	MIC 1 overrides other input signals with 0-30dB attenuation EMC overrides all inputs except MIC 1
Controls	Individual gain controls, power switch
Indicators	Power LED, output level meter, protect
Protection	AC fuse, short-circuit and high temperature
Power Supply	~110V/60Hz or ~230V/50Hz, DC 24V optional
Power Consumption	60W
Weight	8.9Kg
Dimensions	484 x 350 x 88mm
Finish	Panel: aluminum plate, black or golden (optional) Case: steel plate, black

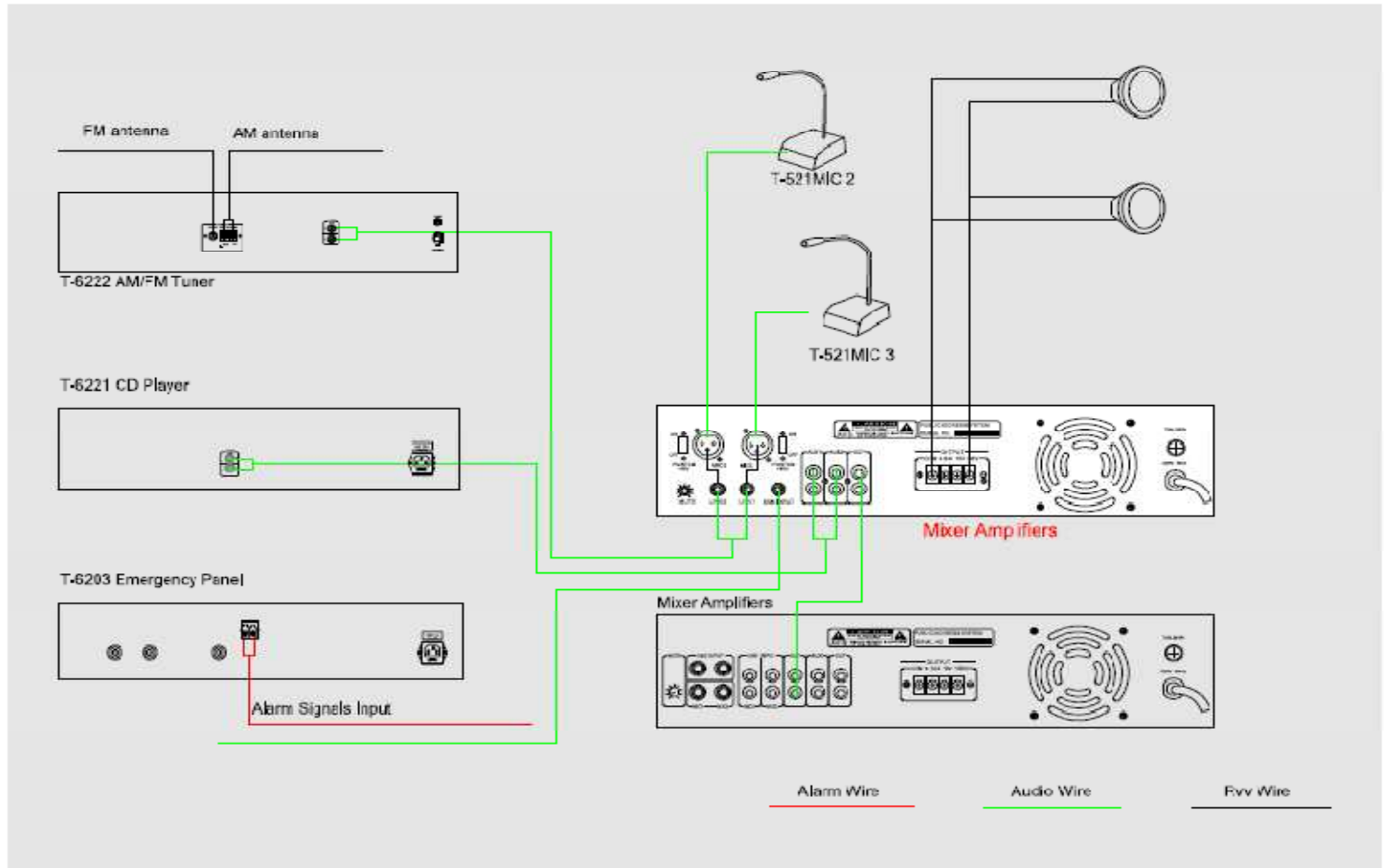
Front Panel



Rear Panel



Connections





Descriptions

The basic public address mixer amplifiers have power ratings from 60W. They are featured of 3 balanced microphone inputs, 2 aux inputs and 2 EMC inputs.

Priority muting is achieved via EMC1-2 for overriding other inputs except Mic1 on front panel. Individual gain controls are provided for Mic 1-3 and Aux 1-2, bass and treble controls and master volume control are provided for overall tone control. 70V, 100V and low impedance 4-16ohms speaker outputs are provided. Extensive protection from short-circuit, overload and high temp.

Optional

- * DC 24V available on less than 550W models
- * Panel with/without handhold
- * Faults monitoring module, it can output short circuit signal to achieve main/spare amplifier switch

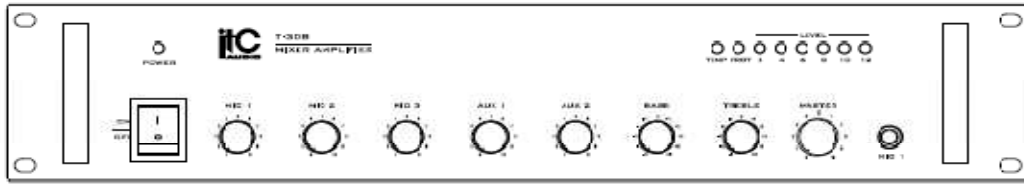
Specifications

Model	T-60B
Rated Power Output	60W
Speaker Outputs	70V, 100V & 4~16Ω
Input	MIC 1, 2, 3: 5mV/600Ω, Balanced, MIC1 6.3 balanced MIC2, 3 XLR balanced with phantom power AUX 1, 2: 250mV/15KΩ, Unbalanced EMC : 250mV/15KΩ, Unbalanced
Tone	Bass ± 10dB at 100Hz Treble ± 10dB at 10KHz
Frequency Response	50Hz~15KHz(± 2dB)
S/N Ratio	MIC 1,2,3: 66dB; AUX 1,2: 80dB
THD	Less than 0.5% at 1kHz, 1/3 rated power
Muting Function	MIC 1 overrides other input signals with 0-30dB attenuation EMC overrides all inputs except MIC 1
Controls	Individual gain controls, power switch
Indicators	Power LED, output level meter, protect
Protection	AC fuse, short-circuit and high temperature
Power Supply	~110V/60Hz or ~230V/50Hz, DC 24V optional
Power Consumption	100W
Weight	7.3Kg
Dimensions	484 x 350 x 88mm
Finish	Panel: aluminum plate, black or golden (optional) Case: steel plate, black

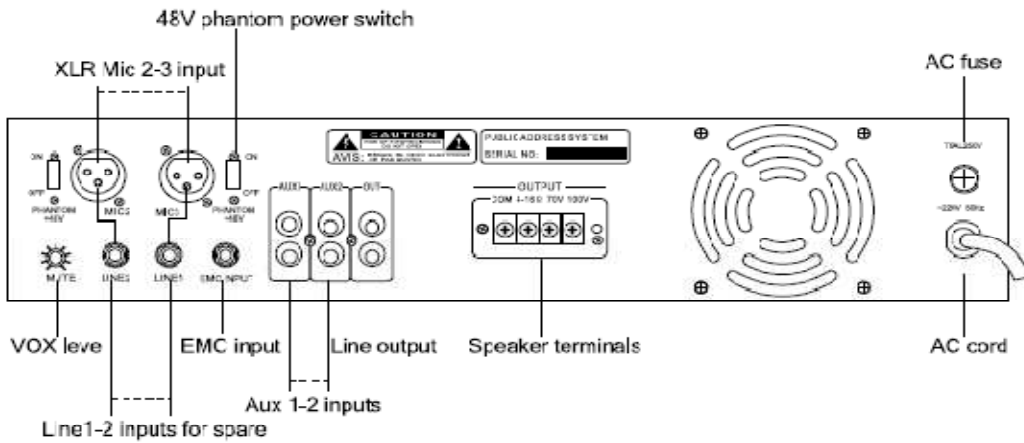
Features

- * Mixer amplifier for paging and background music system
- * Rated power from 60W
- * 2U rack mount (less than 120W)
- * 70V, 100V and low impedance 4-16ohm speaker output
- * Three balanced Mic inputs
- * Mic 1(phone jack) with VOX priority and VOX level on front pane
- * Mic 2-3 by XLR type on rear panel with phantom power
- * Two Aux Inputs and 2 line inputs for spare use
- * Two EMC priority inputs
- * EMC1 has priority over all inputs except MIC1
- * Mic 1-3, Aux 1-2 and master volume controls and bass/treble tone control
- * Short circuit, overload and high temp protection

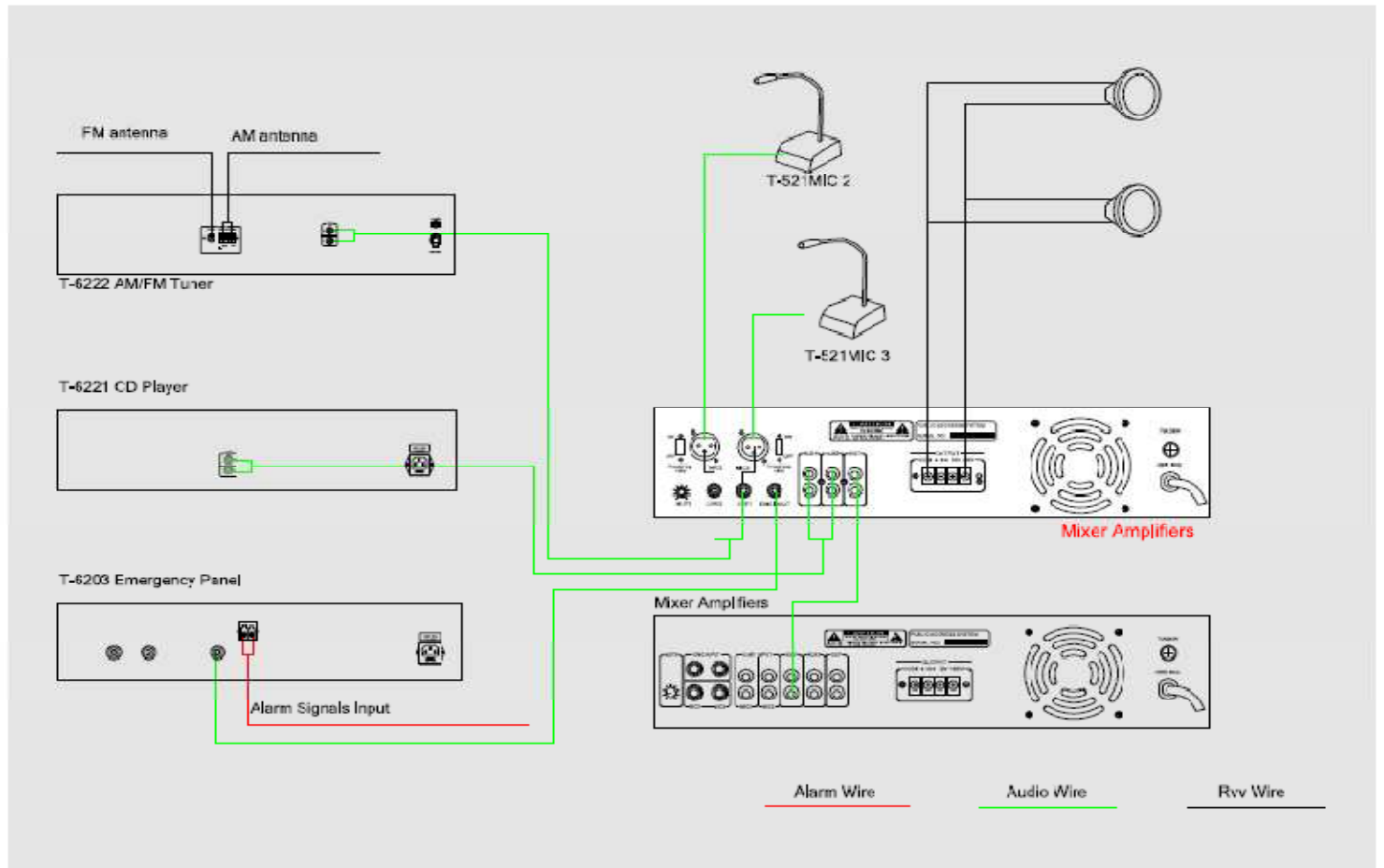
Front Panel



Rear Panel



Connections





Descriptions

The basic public address mixer amplifiers have power ratings from 120W. They are featured of 3 balanced microphone inputs, 2 aux inputs and 2 EMC inputs.

Priority muting is achieved via EMC1-2 for overriding other inputs except Mic1 on front panel. Individual gain controls are provided for Mic 1-3 and Aux 1-2, bass and treble controls and master volume control are provided for overall tone control. 70V, 100V and low impedance 4-16ohms speaker outputs are provided. Extensive protection from short-circuit, overload and high temp.

Optional

- * DC 24V available on less than 550W models
- * Panel with/without handhold
- * Faults monitoring module, it can output short circuit signal to achieve main/spare amplifier switch

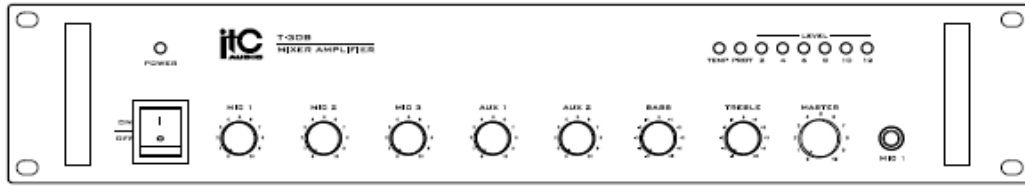
Features

- * Mixer amplifier for paging and background music system
- * Rated power from 120W
- * 2U rack mount (less than 120W)
- * 70V, 100V and low impedance 4-16ohm speaker output
- * Three balanced Mic inputs
- * Mic 1(phone jack) with VOX priority and VOX level on front panel
- * Mic 2-3 by XLR type on rear panel with phantom power
- * Two Aux Inputs and 2 line inputs for spare use
- * Two EMC priority inputs
- * EMC1 has priority over all inputs except MIC1
- * Mic 1-3, Aux 1-2 and master volume controls and bass/treble tone control
- * Short circuit, overload and high temp protection

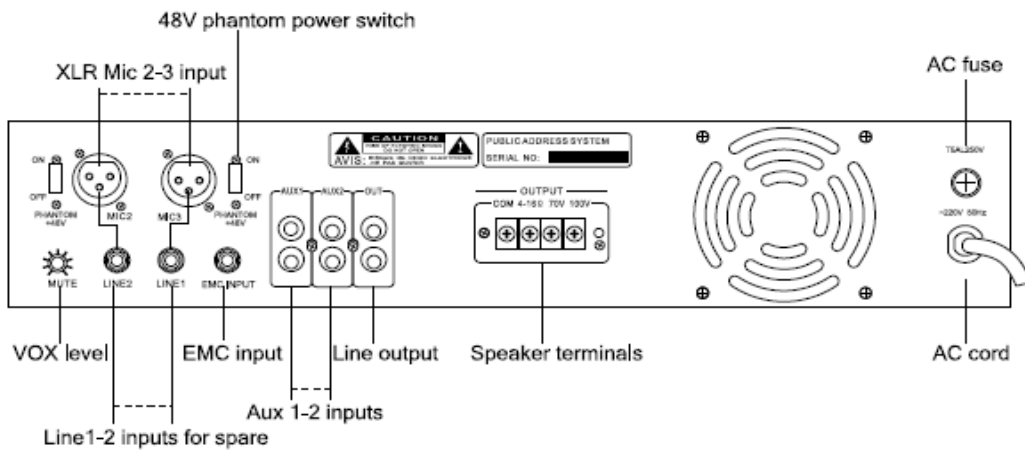
Specifications

Model	T-120B
Rated Power Output	120W
Speaker Outputs	70V, 100V & 4~16Ω
Input	MIC 1, 2, 3: 5mV/600Ω, Balanced, MIC1 6.3 balanced MIC2, 3 XLR balanced with phantom power AUX 1, 2: 250mV/15KΩ, Unbalanced EMC : 250mV/15KΩ, Unbalanced
Tone	Bass ± 10dB at 100Hz Treble ± 10dB at 10KHz
Frequency Response	50Hz~15KHz(± 2dB)
S/N Ratio	MIC 1,2,3: 66dB; AUX 1,2: 80dB
THD	Less than 0.5% at 1kHz, 1/3 rated power
Muting Function	MIC 1 overrides other input signals with 0-30dB attenuation EMC overrides all inputs except MIC 1
Controls	Individual gain controls, power switch
Indicators	Power LED, output level meter, protect
Protection	AC fuse, short-circuit and high temperature
Power Supply	~110V/60Hz or ~230V/50Hz, DC 24V optional
Power Consumption	200W
Weight	9.5Kg
Dimensions	484 x 350 x 88mm
Finish	Panel: aluminum plate, black or golden (optional) Case: steel plate, black

Front Panel



Rear Panel



Connections

